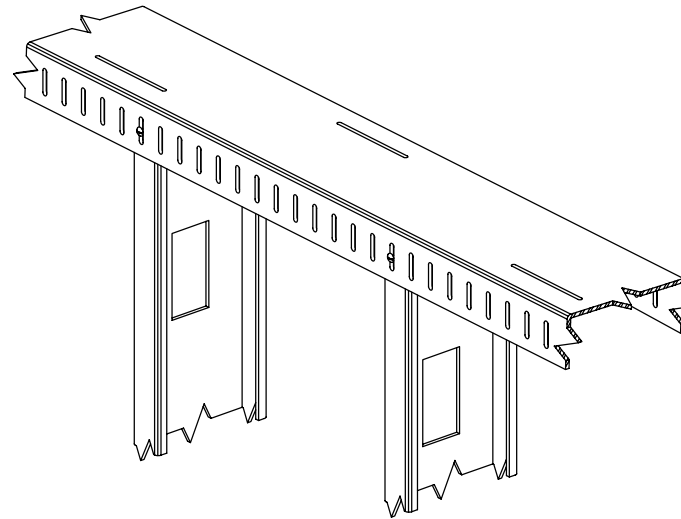
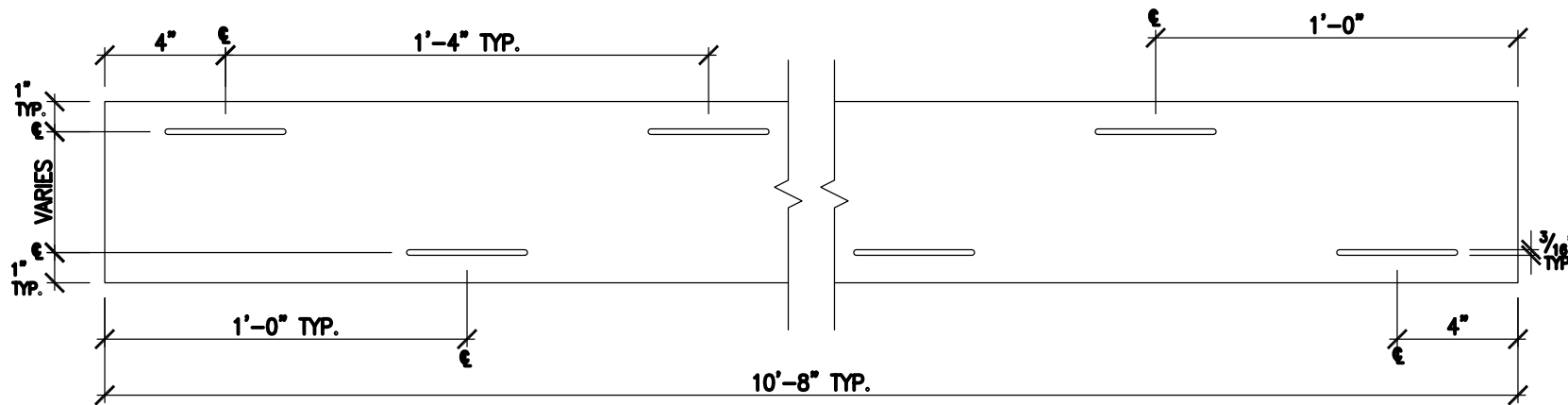


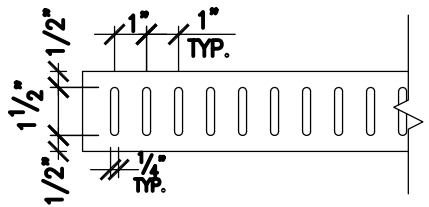
TOP VIEW @ 1-5/8", 2-1/2", 3-5/8", 4" SCT
(SHOWN W/ OPTIONAL SLOTS IN WEB)



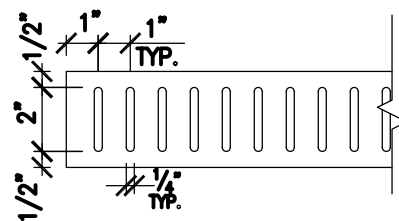
ISOMETRIC VIEW OF TYPICAL CONSTRUCTION
(SHOWN W/ OPTIONAL SLOTS IN WEB)



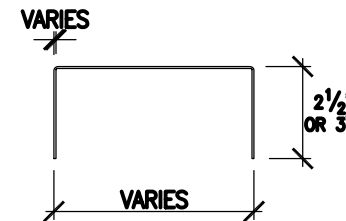
TOP VIEW @ 5-1/2", 6", 8", 10", 12" SCT
(SHOWN W/ OPTIONAL SLOTS IN WEB)



SIDE VIEW @ 2-1/2" LEG SCT



SIDE VIEW @ 3" LEG SCT



FRONT VIEW OF SCT

ALLOWABLE LATERAL LOAD FROM WALL STUD INTO SCT:

SCT THICKNESS	2 1/2" LEG	3" LEG
	ALLOWABLE POINT LOAD	ALLOWABLE POINT LOAD
33 MIL	113#	88#
43 MIL	188#	149#
54 MIL	349#	304#
68 MIL	516#	446#
97 MIL	717#	609#
118 MIL	903#	750#

NOTES:

- STUDS SPACED @ 16" O/C OR MORE.
- 33 MIL STUD AND HEAVIER ASSUMED FOR 33 AND 43 MIL SLOTTED COMPENSATION TRACK (SCT). 43 MIL STUD AND HEAVIER ASSUMED FOR 54 MIL AND HEAVIER SCT. 54 MIL STUD AND HEAVIER ASSUMED FOR 68 MIL AND HEAVIER SCT. A THINNER GAUGE OF STUD CAN BE USED WITH THE SCT OTHER THAN ASSUMED ABOVE, BUT THE ALLOWABLE POINT LOAD MUST BE REDUCED TO THE CORRESPONDING STUD GAUGE (I.E. 43 MIL STUD USED WITH 68 MIL SCT RESULTS IN AN ALLOWABLE POINT LOAD OF 188 POUNDS).
- #8 SMS ASSUMED FOR 33 AND 43 MIL SCT. #10 SMS ASSUMED FOR 54 MIL AND HEAVIER SCT. IF #8 SMS ARE TO BE SUBSTITUTED FOR #10 SMS, SEE CHART BELOW.

ALLOWABLE LATERAL LOAD FROM WALL STUD INTO SCT W/ A #8 SMS:

TRACK THICKNESS	2 1/2" LEG	3" LEG
	ALLOWABLE POINT LOAD	ALLOWABLE POINT LOAD
33 MIL	113#	88#
43 MIL	188#	149#
54 MIL	328#	286#
68 MIL	485#	419#
97 MIL	674#	572#
118 MIL	849#	705#

NOTES:

- SAME ASSUMPTIONS AS CHART ABOVE APPLY EXCEPT #3.

GENERAL NOTES:

- AVAILABLE DEPTHS OF SCT: 1 5/8", 2 1/2", 3 5/8", 4", 5 1/2", 6", 8", 10", AND 12"
- 1 5/8" AND 2 1/2" SCT DEPTHS ONLY AVAILABLE IN 2 1/2" LEG. ALL OTHER SCT DEPTHS AVAILABLE IN BOTH 2 1/2" AND 3" LEGS.
- 1 5/8" AND 2 1/2" SCT DEPTHS ONLY AVAILABLE IN 33 MIL TO 68 MIL. ALL OTHER SCT DEPTHS AVAILABLE IN 33 MIL TO 118 MIL.

TRACK DESIGNATION:



- MEMBER DEPTH:** ALL MEMBER DEPTHS ARE TAKEN IN 1/100 INCHES. (EXAMPLE: 6"-600/100 INCHES)
- STYLE:** SLOTTED COMPENSATION TRACK
- LEG WIDTH:** ALL LEG WIDTHS ARE TAKEN IN 1/100 INCHES. (EXAMPLE: 2-1/2"= 250/100 INCHES)
- MATERIAL THICKNESS:** THE MINIMUM BASE METAL THICKNESS IN MILS. (EXAMPLE: 0.054IN.=54MILS; 1 MIL=1/1000 INCH) MINIMUM BASE METAL THICKNESS REPRESENTS 95% OF THE DESIGN THICKNESS.

- CONNECTION OF SCT TO STRUCTURE ABOVE TO BE DESIGNED BY ENGINEER OF RECORD FOR REQUIRED LOADING.
- CAPACITIES OF STUD TO BE VERIFIED BY ENGINEER OF RECORD.
- LOADS ASSUME STUD IS NOT WITHIN 8" OF TRACK ENDS. REDUCE CAPACITY BY 50% IF STUD IS AT END OF SCT.



FICCADENTI
WAGGONER
and CASTLE

Structural Engineers
3100 Oak Road, Suite 390
Walnut Creek, CA 94597
Telephone: (925) 280-0098
Facsimile: (925) 280-0096
www.fwcse.com

R & P SUPPLY

2592 Abels Lane
Las Vegas, Nevada 89115
Tel: (702) 400-8539
Fax: (702) 247-9512

REV.	DATE	DESCRIPTION
△		
△		
△		
△		
△		
△		
△		
△		

DRAWN BY E.M.B.
SCALE N.T.S.
DATE 06.07.13
REVISION NO. △

SHEET TITLE
SLOTTED
COMPENSATION
TRACK

PROJECT

DEVELOPMENT

SITE LOCATION

PROJECT NO.
B13-102

SHEET NO.
1